

Flat 2, 57, St Michaels Street, Shrewsbury, SY1 2HA
£700 Per Month



Flat 2, 57, St Michaels Street, Shrewsbury, SY1 2HA

£700 Per Month

VIRTUAL TOUR AVAILABLE - Modernised one bedroom first floor apartment in a well maintained residential block a short walk to the north of Shrewsbury town centre. The property benefits from views over a park to the front and easy access to the Railway station. Includes off road parking.

Available: Immediately

Description

Communal Entrance Hall, Hall, open plan living room with new kitchen including integrated fridge, oven, hob and washing machine. Double bedroom, shower room including heated towel radiator and mirrored cabinet. Gas central heating, secondary glazing. Off road parking to left hand side of building. EPC C

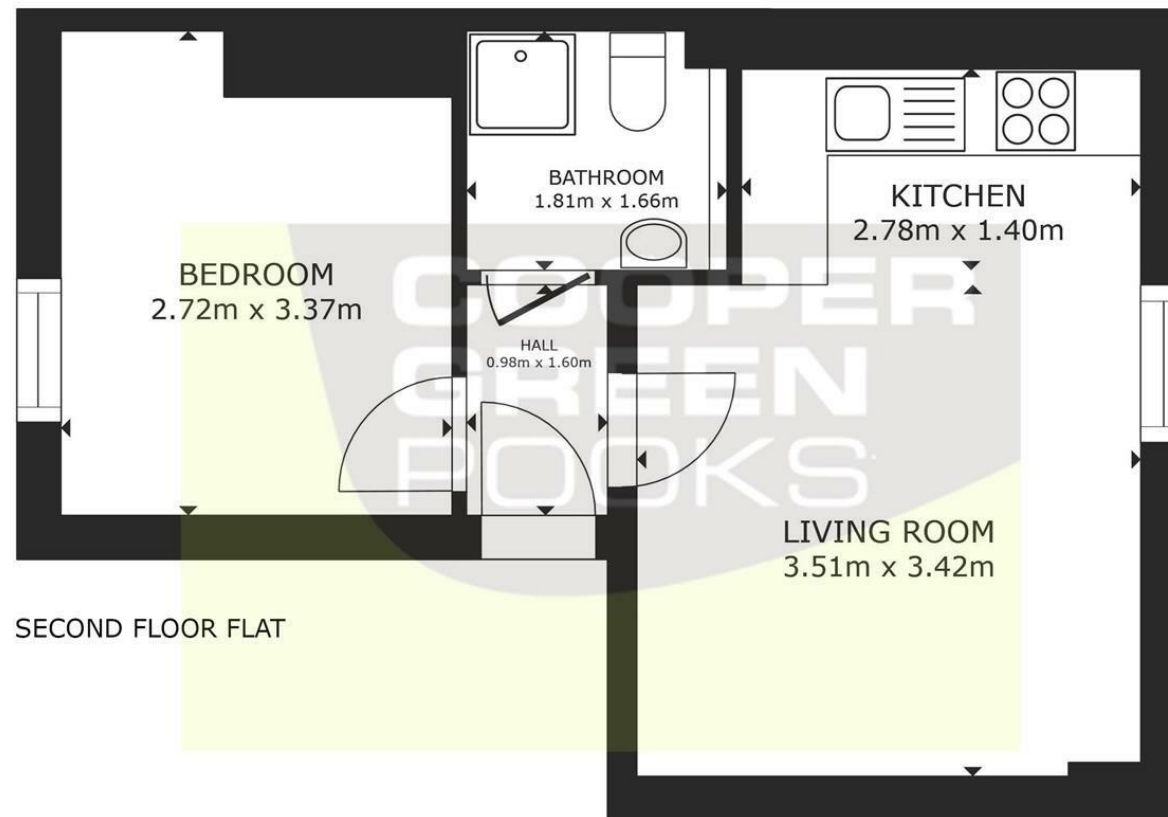
Unfurnished

Council Tax Band: A

Available: 19th December 2025

EPC: C

Floor Plans



GROSS INTERNAL AREA
FLOOR PLAN 30.9 m²
TOTAL : 30.9 m²
SIZES AND DIMENSIONS ARE APPROXIMATE, ACTUAL MAY VARY.

These particulars, whilst believed to be accurate are set out as a general outline only for guidance and do not constitute any part of an offer or contract. Intending purchasers should not rely on them as statements of representation of fact, but must satisfy themselves by inspection or otherwise as to their accuracy. No person in this firm's employment has the authority to make or give any representation or warranty in respect of the property.